

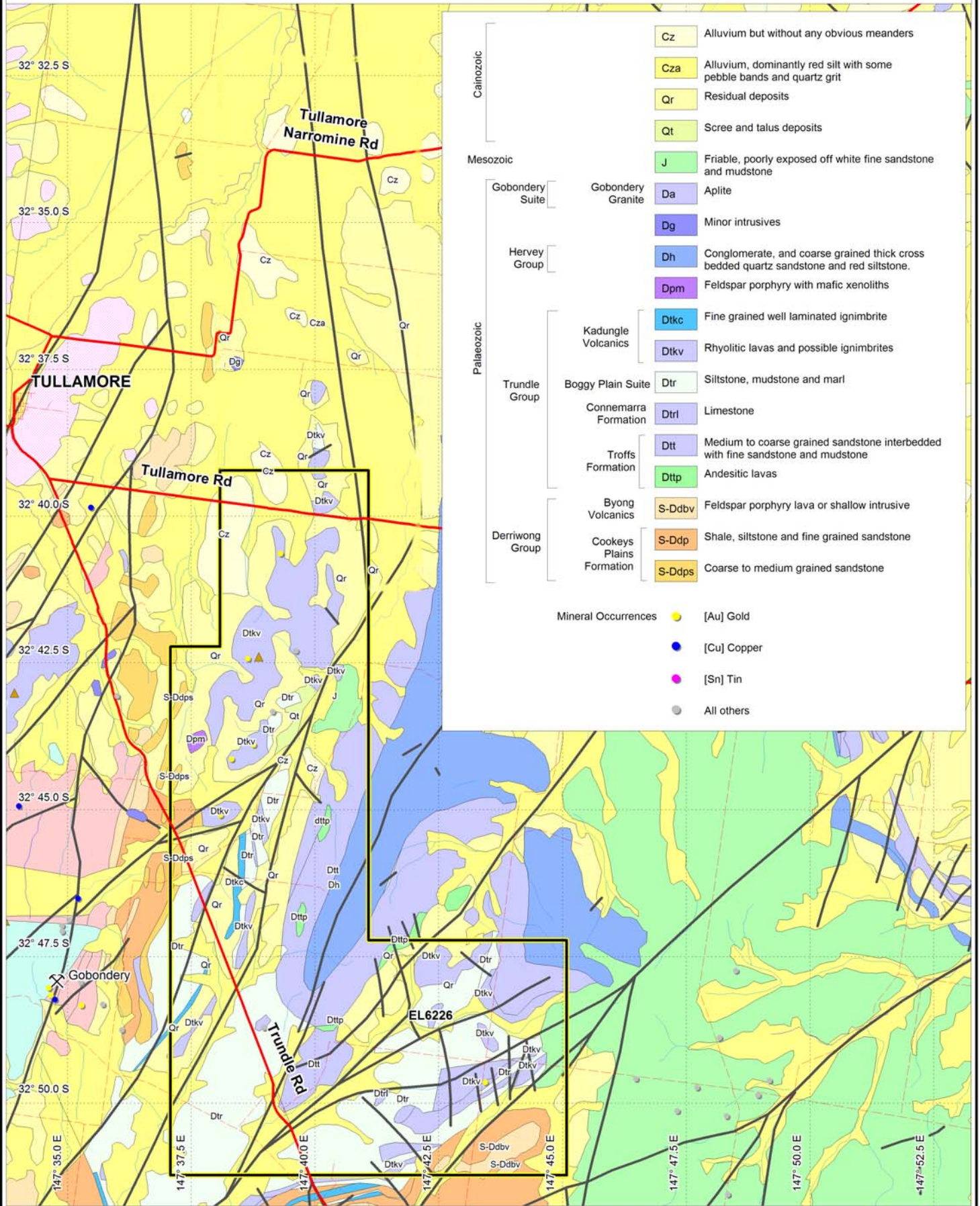


0 8000m

Map Projection: Longitude / Latitude (GDA 94)

Compiled: 12 / 1 / 2007

This map is copyright© (2007), of YTC Resources Ltd



Cretaceous	Cz	Alluvium but without any obvious meanders
	Cza	Alluvium, dominantly red silt with some pebble bands and quartz grit
	Qr	Residual deposits
	Qt	Scree and talus deposits
Mesozoic	Gobondery Suite	
	Gobondery Granite	Da Aplite
Palaeozoic	Hervey Group	
	Dg	Minor intrusives
	Dh	Conglomerate, and coarse grained thick cross bedded quartz sandstone and red siltstone.
	Dpm	Feldspar porphyry with mafic xenoliths
Palaeozoic	Kadungle Volcanics	
	Dtkc	Fine grained well laminated ignimbrite
	Dtkv	Rhyolitic lavas and possible ignimbrites
	Trundle Group	
	Boggy Plain Suite	Dtr Siltstone, mudstone and marl
	Connemarra Formation	Dtrl Limestone
	Troffs Formation	
	Dtt	Medium to coarse grained sandstone interbedded with fine sandstone and mudstone
	Dttp	Andesitic lavas
	Derriwong Group	
Byong Volcanics	S-Ddbv Feldspar porphyry lava or shallow intrusive	
Cookeys Plains Formation	S-Ddp Shale, siltstone and fine grained sandstone	
	S-Ddps Coarse to medium grained sandstone	
Mineral Occurrences		
	[Au] Gold	●
	[Cu] Copper	●
	[Sn] Tin	●
	All others	●